



Founded in 2020, Cicalento Studio is located in an historic eighteenth century villa hidden away in the Tuscan countryside. The villa is set in a natural reserve, but just a 5 minute drive from the center of the city of Arezzo.

The structure, which has kept intact its ancient beauty, contains within it a jewel of acoustic design.

Conceived by Francesco Ponticelli, (musician, composer, sound engineer and producer) in 2018, the Cicalento Recording Studio was designed "with 8 hands" by the professionals of Studio Sound Service: each with his specific contribution, the 4 designers have given life to a unique studio of its kind.

Francesco Ponticelli made an important contribution, becoming himself an active part in the creative phases, and making sure that the studio was modeled on his artistic needs and sensibilities.







Photo © Paolo Soriani



Control Room

Despite the classic style, the design of the direction is avant-garde, of a "non-environment" type, with a reflective front and an absorbent back. Each element, including the furnishings, has been designed to optimize the diffusion of the acoustic field. The speaker on the back is unique, it has been specially designed for this study and, thanks to the different depths of its elements and the numerous discrepancies, it is able to create a "broadband" diffusion of the sound coming from the front.

The "cloud" of the ceiling hides a large layer of absorbent material that absorbs low frequencies, balancing the frequency response. The reflective part of the ceiling directs the sound coming from the speakers towards the back wall, from which it is adequately absorbed / re-diffused. No deferred reflection arrives at the listening point that could confuse perception.

It is equipped with a Studer 900 console and selected outboard components. Natural light enters from the glass door and is equipped with a recirculation and conditioning system for maximum comfort during the delicate recording and mixing phases. The direction is in direct visual communication with the Main Hall.



M a i n Hall

The Main Hall is a spacious 95sqm live room with soaring 6m high ceilings. Similarly to the Control Room, this room was carefully designed, leaving nothing to chance. The ceiling "sails" are devices with a double function: they help to diffuse the sound coming from below and minimize the phenomenon of sound focus which, otherwise, would be produced by the two pitches of the roof.

The floor has been designed to create areas with different acoustic response, each designed for the instrument it will serve. The design of the walls is done in such a way as to provide the right variety of absorption, reflection and diffusion, so as to create a natural reverberation, neither too long nor too dry, and a diffused sound field.

The parallelism between the long walls, a possible cause of repeated echoes, was interrupted thanks to a game of inclinations. The long walls also hide movable gobos that can be used independently within the room, creating isolated areas for ad hoc recordings.

By simply moving around the various points of the room you will hear your instrument react differently, you will find the perfect point to enhance the sound you are looking for. The space in which a musical instrument is immersed can be imagined as its invisible extension. Hearing a room's response is one of the most important inspiring factors.

The room is flooded by natural light coming in through four windows and a large glass door that overlook the villa's garden.



Classic Hall

With its lofty 8 meter-high ceilings and original fixtures, the Classic Hall is a prestigious 122 square meter hall that has been hosting chamber music concerts since the early 18th Century.

The architecture of the hall, in addition to being of extraordinary beauty, offers rich acoustics with a dark and dense reverberation that particularly enhances string and wind instruments, pianos, harpsichords and voices.

Adjacent to the Classic Hall is an oval room with a vaulted ceiling that generates a 2-second reverberation; it can be used as an echo chamber for both mixing and tracking.



Iso Booth

The Iso Booth is in direct visual communication with the Main Hall, a very absorbing space that is useful when total isolation is required.



Gobos

6 gobos, specially designed for this studio, can be freely positioned in the main hall with the possibility of creating spaces with good acoustic separation.



Steinway & Sons Model-D

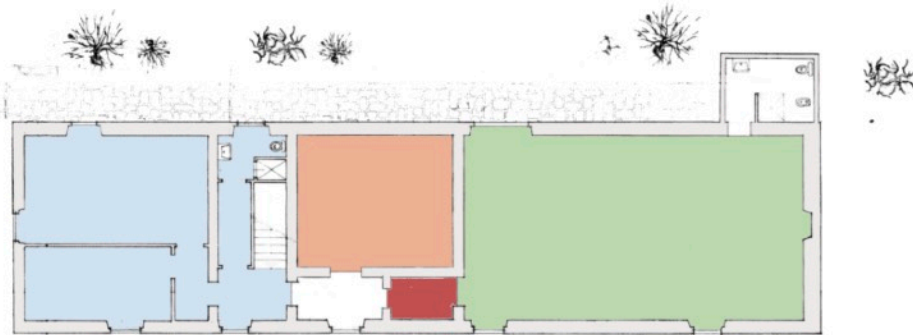
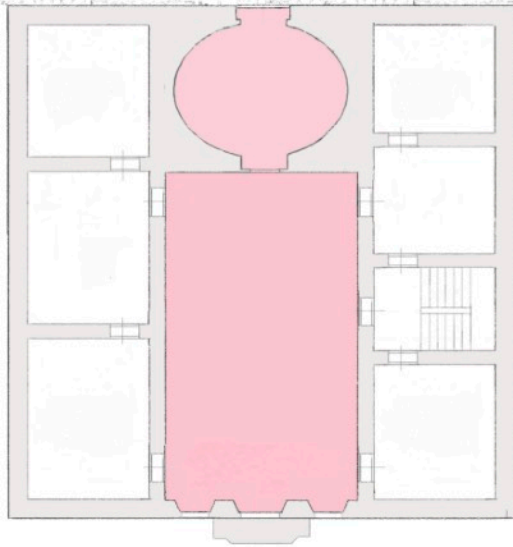


The piano supplied in the Cicaletto Recording Studio is a 2006 Steinway D, purchased by Bussotti in Florence (legendary tuner of Arturo Benedetti Michelangeli) in 2018.

From 2006 to 2018 it was played in concert by world-famous pianists to whom Bussotti asked to leave a signature.



- Baroque Hall
- Residential
- Control Room
- Iso Booth
- Live Room
- Lemon House



INSTRUMENTS

Piano	Steinway Model D (2006) - Bussotti
Drums	Gretsch USA Custom (14x18 Bass Drum, 7x10 & 8x12 Rack Toms, 14x14 Floor Tom)
	Ludwig Supraphonic Snare
	Yamaha Stage Custom 22-10-12-14
	Tamburo XD 16-10-13
	Toca Player's Wood Conga Set + varie
Basses	Fender Jazz '63 Vintage (on request)
	Fender Precision Bass '74
	Martin Custom Acoustic Bass
	Basso acustico di liuteria Gabriele Ballabio 2012
	Rickenbacker 4003 '90s
Amps	Mesa Boogie Caliber 50 1x12"
	Geloso G221 (Head)
	Ampeg SVP CL tube preamp
	Walter Woods (100w Red Light)
	Aguilar GS112
	Aguilar DB285 JC
Rhodes	Stage 73 Mark 1
Synth	Sequential Circuits Six Track
	Studio Electronics Boomstar SEM
	Arturia Microbrute
	Elektron Octatrack
	Vermona DRM 1
Pedals	Malekko Brassmaster (clone) Klon Centaur (clone) Big Cheese Fuzz (clone) Moogerfooger MF-101 Moogerfooger MF-104 Moogerfooger MF-107 Moogerfooger MF-108M MXL Distortion + MXL Bass Octave Deluxe EBS multicom Moollon Bass Overdrive

MICS	PREAMPS	CONVERTERS
Aea R88	Studer 903A (16Ch)	Universal audio 2192
AKG d112	AML 1173 (x4)	Metric Halo ULN-8 3d
AKG d12	Millennia M2B	Metric Halo LIO-8 3d x2
Akg the Tube	Rupert Neve Design 511	RME micstasy + MADI card
AKG414 ULS	AEA trp2	Lynx Aurora 16
Audio Technca Atm450	API 512C (x2)	_____
Cad E100	GML 2032 (x4) / on request	
U67 Clone by Alessandro Benedettelli	Metric Halo (8Ch)	AVID HD MADI
DPA 4003 (matched pair)	RME Micstasy (8Ch)	
DPA 4012 (matched pair)		
DPA 4061		
Ehrlund Pickup		
Electro Voice RE20		
Lawson L47s		
Neumann tlm170i		
Realistic PZM		
Rode NT1 (old) (Matched Pair)		
Rode NT1a		
Royer R121 (Matched Pair)		
Se Electronics Se4 (Matched Pair)		
Sennheiser Md441 x 2		
Sennheiser MKH 800 twin MP / on request		
Shoeps cmt 441		
Shoeps Custom PZM Microphone		
Shure Beta58		
Shure Sm7b		
Shure Sm 57 (x2)		
NoHype Audio LRM-2b (x2)		
Line Audio CM4 (x2)		
Coles 4038 (Matched Pair)		
Yamahiko Piano Pickup		

CONSOLE	MONITOR	OUTBOARD	DAW	PERSONAL MONITORING	ELECTRIC CURRENT
Studer 903A	Genelec 1238A Adam A7X Yamaha NS-10	SPL Iron Mastering Compressor SPL PQ Mastering Eq Tube tech smc2b SSL G Comp (clone) Lexicon 960L / on request Lexicon LXP 15 Lexicon Alex Line 6 Mod Pro Moogerfooger MF-101 Moogerfooger MF-104 Moogerfooger MF-107 Moogerfooger MF-108M	Pro Tools HD Metric Halo	Mytek PQ2 (5 mixers with 3 headphone output each)	6kW + 15kW

Accomodation

Villa Il Cicaleto

Several rooms are available in the villa Il Cicaleto, adjacent to the recording studio. The villa's rooms are available from May to September



Casa Marina

An independent apartment adjacent to the studio with two single bedrooms and a double bedroom in the mezzanine. equipped with a large dining area



Villa Vivarelli

Affiliated farmhouse, located 10 minutes by car from the studio. It can accommodate up to 16 people, equipped with a swimming pool.
<http://www.villavivarelli.com>

